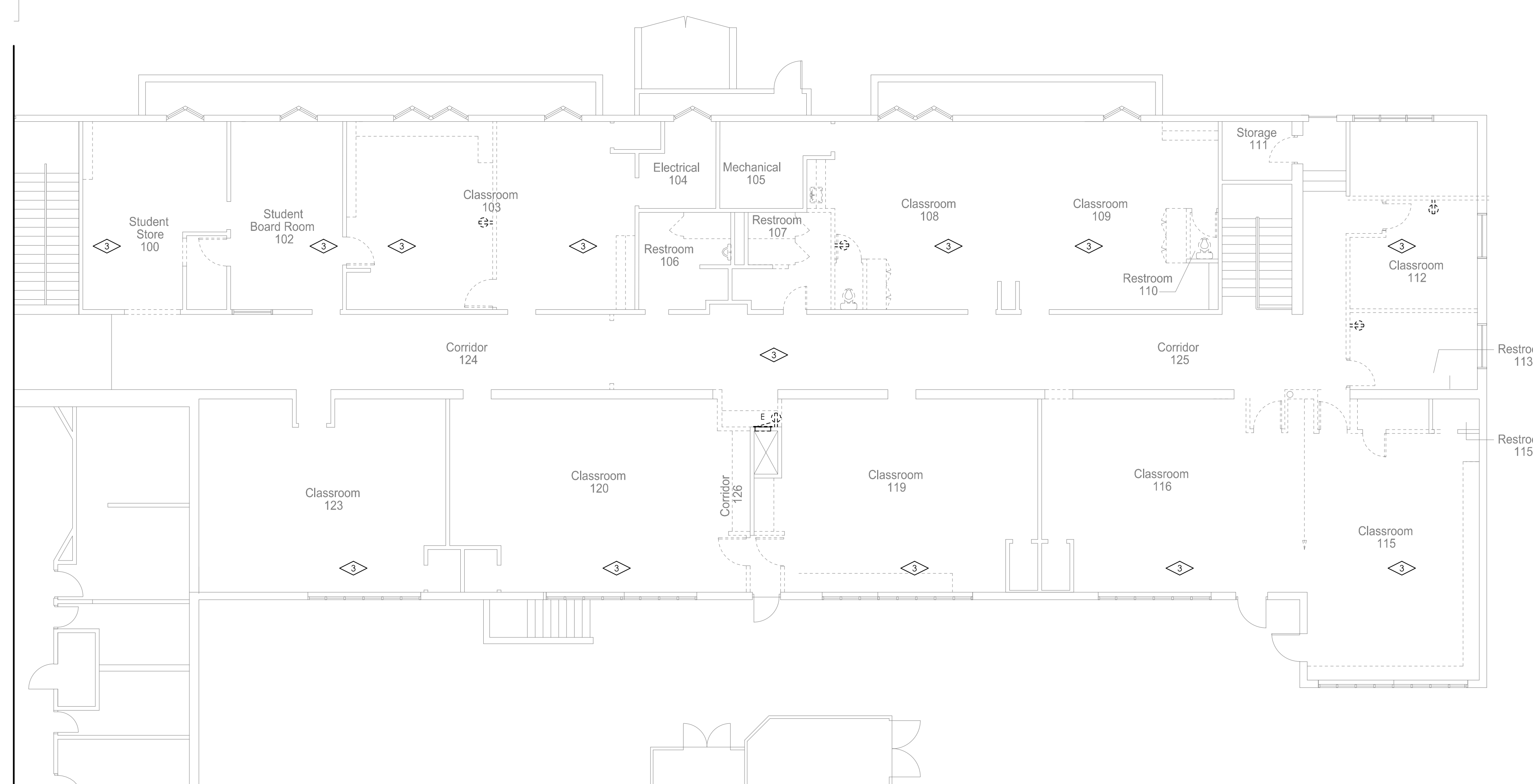


**2 PARTIAL FIRST FLOOR DEMOLITION PLAN**  
SCALE: 1/16" = 1'-0"  
0 4 8 16 32 64



**1 PARTIAL FIRST FLOOR DEMOLITION PLAN**  
SCALE: 1/16" = 1'-0"  
0 4 8 16 32 64

### DEMOLITION NOTES:

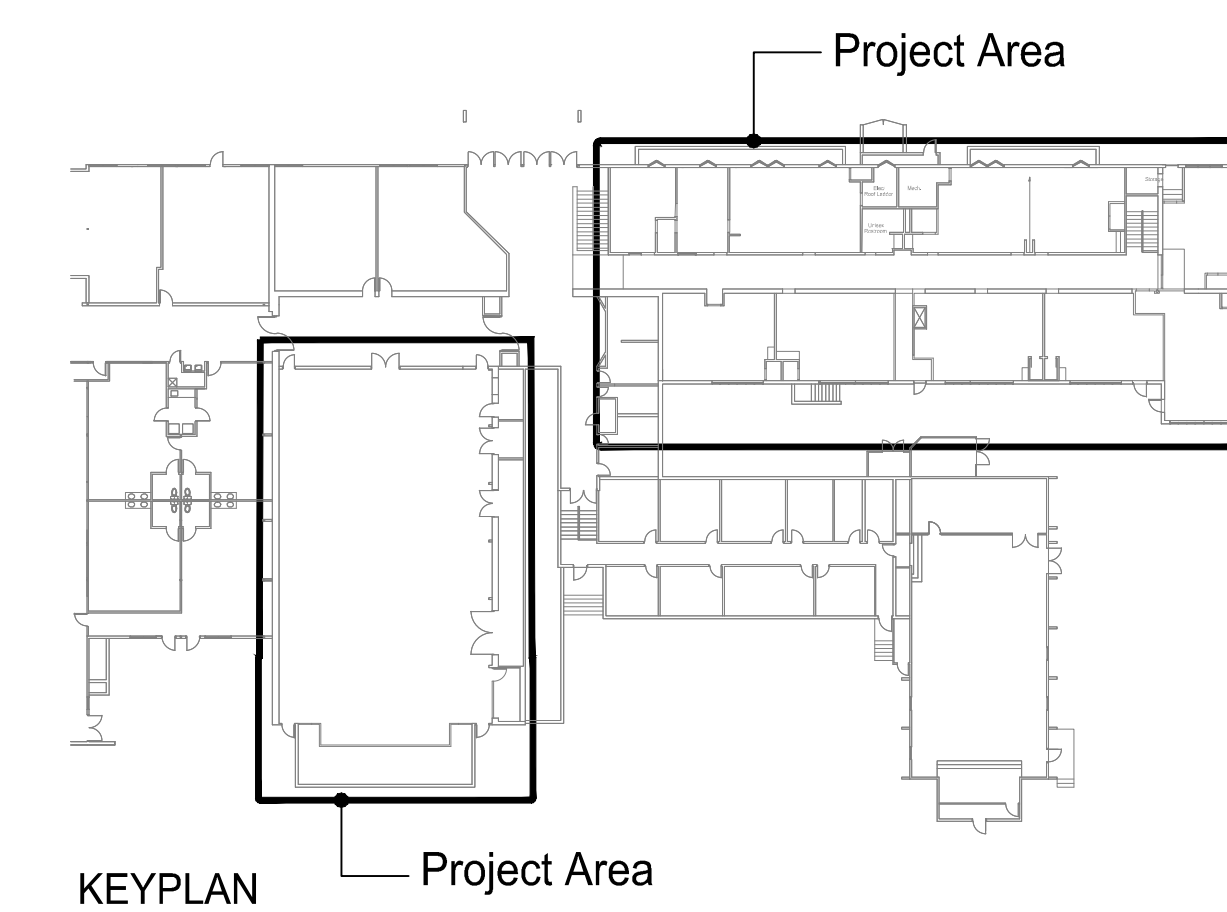
- UP-TO-DATE AS-BUILT ELECTRICAL PLANS ARE NOT AVAILABLE FOR THIS BUILDING. INFORMATION FOR EXISTING CIRCUITRY IS BASED ON EXISTING PANEL DIRECTORIES, AVAILABLE DRAWINGS, AND ASSUMPTIONS. IF SIGNIFICANT DISCREPANCIES ARE FOUND THAT CANNOT BE EASILY RESOLVED, CONTACT THE ARCHITECT OR ENGINEER.
- PROVIDE TYPED, UPDATED PANEL DIRECTORIES FOR ALL NEW AND EXISTING WORK FOR REMODELED AREA.
- ALL BREAKERS THAT ARE SPARES SHALL BE TURNED OFF AND SHALL BE MARKED ON THE REVISED PANEL DIRECTORIES.
- ELECTRICAL EQUIPMENT BEING REMOVED IS SHOWN IN LIGHT DASHED. FIELD VERIFY AND COORDINATE WITH APPROPRIATE CONTRACTORS FOR ADDITIONAL EQUIPMENT BEING REMOVED FOR THIS REMODEL. COORDINATE WITH OWNER OR GENERAL CONTRACTOR FOR DIRECTION OF EQUIPMENT BEING DISPOSED OF OR RETURN TO BUILDING STOCKPILED PRIOR TO DEMOLITION. REFER TO BUILDING CODE/SPECIFICATIONS FOR ADDITIONAL INFORMATION.
- DASHED LINES INDICATE ITEMS TO BE REMOVED. DISCONNECT AND REMOVE DEVICES; ALL ASSOCIATED WIRING AND CONDUIT BACK TO POINT OF ORIGIN. RETAIN CIRCUIT CONTINUITY FOR REMAINING DEVICES. GENERAL CONTRACTOR SHALL PATCH WALL AND FINISHED TO MATCH NEW/EXISTING WALL FINISHED.
- EXISTING WALLS BEING REMOVED. REMOVE ALL ELECTRICAL EQUIPMENT INCLUDING CONDUIT AND WIRING BACK TO POINT OF ORIGIN. RETAIN CIRCUIT CONTINUITY FOR REMAINING DEVICES THAT ARE AFFECTED IN THE REMODEL. PRIOR TO DISCONNECTING ANY EXISTING CIRCUITS, ENSURE ADJACENT AREAS WILL NOT BE AFFECTED. REUSE SPARE CIRCUITS TO RECONNECT AFFECTED CIRCUITS AS REQUIRED.
- ELECTRICAL CONTRACTOR SHALL COORDINATE ALL MECHANICAL OR PLUMBING EQUIPMENT REQUIRED TO BE DISCONNECTED AND REMOVED WITH MECHANICAL CONTRACTOR AND/OR PLUMBING CONTRACTOR. REMOVE ALL ASSOCIATED ELECTRICAL DEVICES, CONDUIT AND WIRING BACK TO POINT OF ORIGIN PERTAINING TO MECHANICAL EQUIPMENT BEING REMOVED. ALL MATERIAL AND EQUIPMENT THAT HAS BEEN REMOVED SHALL BE HELD FOR DISPOSAL AS DIRECTED BY OWNER. IF REQUIRED, RETAIN CIRCUIT CONTINUITY FOR REMAINING EQUIPMENT TO BE FULLY FUNCTIONAL.

### ◇ DETAIL NOTES:

- DISCONNECT AND REMOVE EXISTING PANEL 'D'. PROVIDE A NEW 30-CIRCUIT ELECTRICAL PANEL BOARD AND INSTALL AT NEW LOCATION AS SHOWN. EXTEND EXISTING ELECTRICAL SERVICE FEEDER AND BRANCH CIRCUITS AND RECONNECT IN THE SAME SEQUENCE AS EXISTING.
- DISCONNECT EXISTING WATER HEATER DISCONNECT MEANS, CONDUIT AND ASSOCIATED WIRING BACK TO POINT OF ORIGIN. RETAIN CIRCUIT CONTINUITY FOR REMAINING DEVICES IF REQUIRED.
- FLORESCENT OR INCANDESCENT LIGHT FIXTURES LOCATED IN THIS AREA SHALL BE DISCONNECTED AND REMOVED. REPLACE LIGHT FIXTURES AS INDICATED ON THE LIGHTING PLAN (E.L.) AND RECONNECT TO EXISTING CIRCUIT SERVING THIS AREA AS REQUIRED AND PER THE MANUFACTURE RECOMMENDATIONS. VERIFY AND COORDINATE THE EXACT LOCATIONS AND REQUIREMENTS WITH THE GENERAL CONTRACTOR PRIOR TO REMOVING OR PURCHASING OF NEW LIGHT FIXTURES.

Aspen Academy

5859 S. University  
Boulevard  
Greenwood  
Village, CO



ISSUES/REVISIONS	
Issued for owner review	22 February 2010
Revised per preliminary code review	18 March 2010
Revised per code review comments	4 April 2010

### PARTIAL FIRST FLOOR DEMOLITION PLANS

PROJECT DIRECTOR	SRH
PROJECT NO.	10004
DATE	February 19, 2010
SHEET NO.	E.2.0