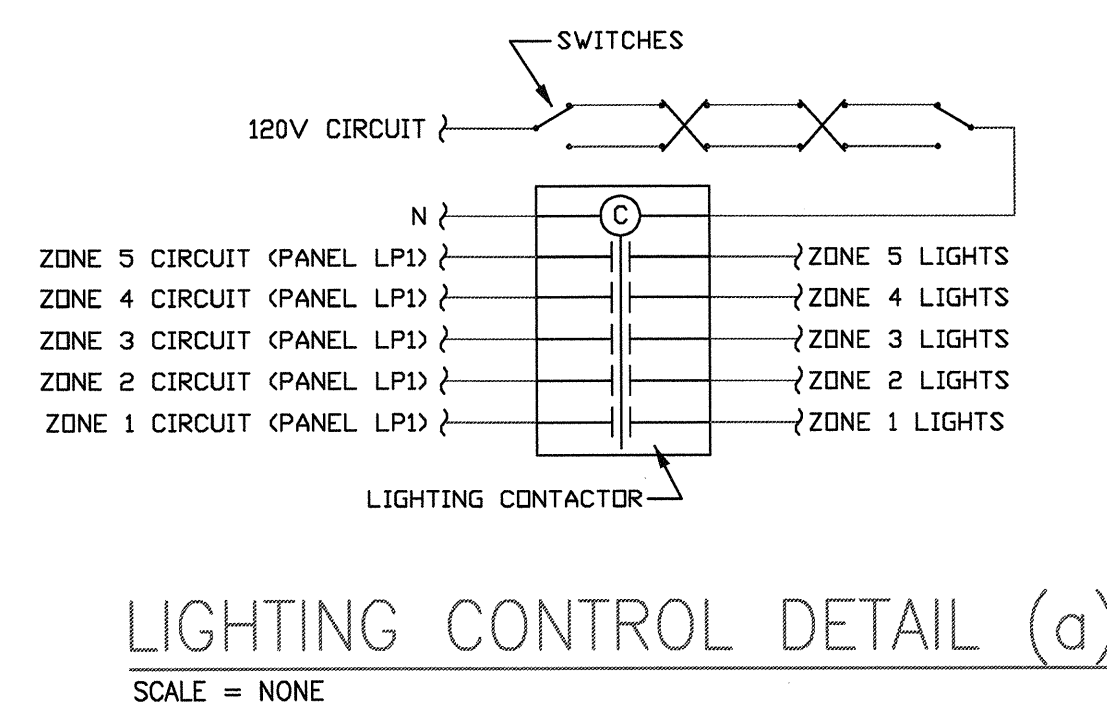
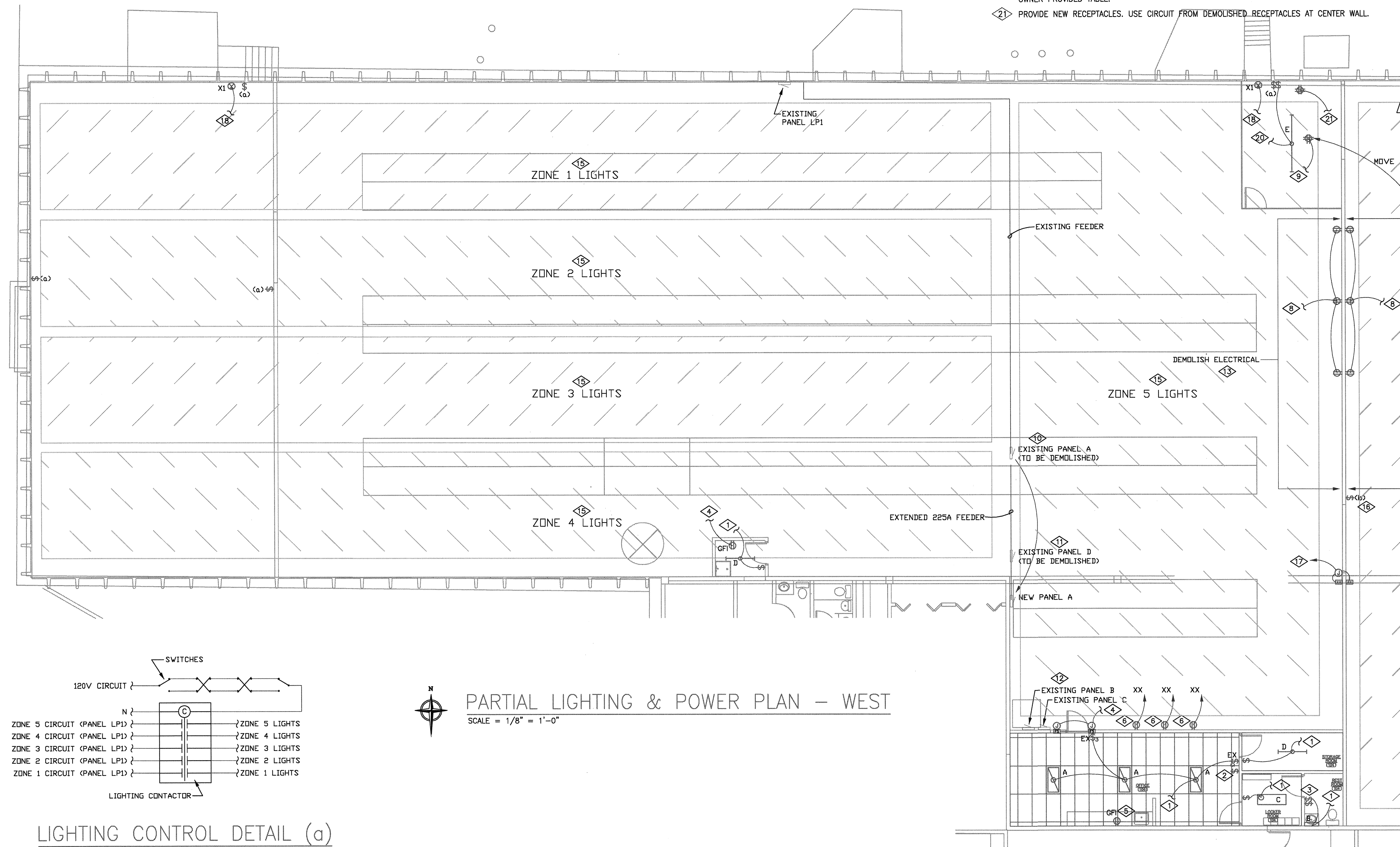


KEY NOTES

(ALL NOTES MAY NOT APPLY)

- 1 CONNECT NEW LIGHTS TO EXISTING CIRCUIT SERVING DEMOLISHED LIGHT FIXTURES.
- 2 EXISTING SWITCH FOR ROOF MOUNTED EXHAUST FAN TO BE REMOVED. SWITCH TO BE RELOCATED TO BATHROOM.
- 3 NEW LOCATION FOR EXHAUST FAN CONTROL SWITCH.
- 4 PROVIDE 120V POWER FROM NEAREST 120V CIRCUIT.
- 5 REPLACE RECEPTACLE WITH GFCI PROTECTED RECEPTACLE.
- 6 COORDINATE LOCATION OF RECEPTACLES FOR REFRIGERATORS WITH OWNER PRIOR TO ROUGH-IN.
- 7 RELOCATE SWITCH FOR WALL MOUNTED LIGHTS TO NEW LOCATION BY DOOR.
- 8 PROVIDE NEW RECEPTACLES. USE CIRCUITS FROM DEMOLISHED RECEPTACLES AT THIS LOCATION.
- 9 RELOCATE CORD DROP TO THIS LOCATION. EXTEND EXISTING CIRCUIT TO THIS LOCATION.
- 10 EXISTING PANEL A TO BE DEMOLISHED. EXISTING LOADS TO BE TRACED AND DOCUMENTED. EXTEND CIRCUITS TO NEW PANEL A AT NEW LOCATION.
- 11 EXISTING PANEL D TO BE DEMOLISHED. PANEL D SERVES LOADS ON WALL BEING DEMOLISHED.
- 12 PANELS B AND C CURRENTLY FED FROM PANEL A. REFEED TO NEW PANEL A. REUSE EXISTING FEEDERS WHERE POSSIBLE.
- 13 DEMOLISH ELECTRICAL DEVICES ALONG THIS WALL. REMOVE CONDUIT AND WIRES TO UPSTREAM BOXES ARE MAKE SAFE.
- 14 EXISTING 3-WAY SWITCH CONTROLLING EAST LIGHTING TO BE REMOVED. LIGHTING TO BE CONTROLLED BY NEW SWITCH LOCATIONS AS SHOWN IN LIGHTING CONTROL DETAIL (b).
- 15 LIGHTING FOR ZONES 1 - 5 ARE TO BE CONTROLLED BY CONTACTOR AND AT SWITCHING LOCATIONS SHOWN. SEE LIGHTING CONTROL DETAIL (a).
- 16 LIGHTING FOR ZONES 6 - 7 ARE TO BE CONTROLLED BY CONTACTOR AND AT SWITCHING LOCATIONS SHOWN. SEE LIGHTING CONTROL DETAIL (b).
- 17 PROVIDE 120V CIRCUIT FROM NEW PANEL A. COORDINATE ROUGH-IN AND ELECTRICAL REQUIREMENTS WITH FIRE DOOR VENDOR PRIOR TO ROUGH-IN. PROVIDE SWITCHES FOR DOOR OPERATION. COORDINATE SWITCH LOCATIONS WITH OWNER.
- 18 REPLACE EXISTING EXIT SIGN WITH NEW.
- 19 PROVIDE NEW EXIT SIGN. CIRCUIT TO LIGHTING CIRCUIT UPSTREAM OF ANY SWITCHING.
- 20 CIRCUIT NEW LIGHT FIXTURE TO SPARE 120V, 20A CIRCUIT IN PANEL LP2. COORDINATE LOCATION OVER OWNER PROVIDED TABLE.
- 21 PROVIDE NEW RECEPTACLES. USE CIRCUIT FROM DEMOLISHED RECEPTACLES AT CENTER WALL.



PARTIAL LIGHTING & POWER PLAN - WEST
SCALE = 1/8" = 1'-0"

IT IS A VIOLATION OF COLORADO STATE LAW FOR ANY PERSON, UNLESS ACTING UNDER THE DIRECTION OF A LICENSED PROFESSIONAL ENGINEER, TO ALTER ANY ITEM ON THIS DRAWING AND/OR RELATED SPECIFICATION. ALL ALTERATIONS MUST BE MADE IN COMPLIANCE WITH COLORADO STATE LAW. THE PROFESSIONAL ENGINEER WHOSE SEAL APPEARS HEREON ASSUMES NO RESPONSIBILITY FOR ANY SUCH ALTERATION OR RE-USE WITHOUT HIS WRITTEN CONSENT.

OWNERSHIP OF INSTRUMENTS OF SERVICE
FIELD DATA, NOTES AND OTHER DOCUMENTS AND INSTRUMENTS PREPARED BY THE PROFESSIONAL ENGINEER OR ARCHITECT SHALL REMAIN THE PROPERTY OF THE DESIGN PROFESSIONAL. NO OTHER PROFESSIONAL SHALL RETAIN OR REPRODUCE ANY PART OF THE INSTRUMENTS OF SERVICE WITHOUT THE WRITTEN CONSENT OF THE DESIGN PROFESSIONAL.

870 PARFET STREET
BUILDING ASSESSMENT
870 PARFET STREET
LAKEWOOD, JEFFERSON COUNTY, COLORADO

Issue Record:

Designed By: LNS	Drawn By: LNS
Date: 02/15/10	Approved By: LS,VOR,JB
Project No.: 10012	File Name: 10012E10

Sheet Title:
PARTIAL LIGHTING & POWER FLOOR PLAN LOWER LEVEL WEST

Sheet Number:
E-1.0
1 of 2