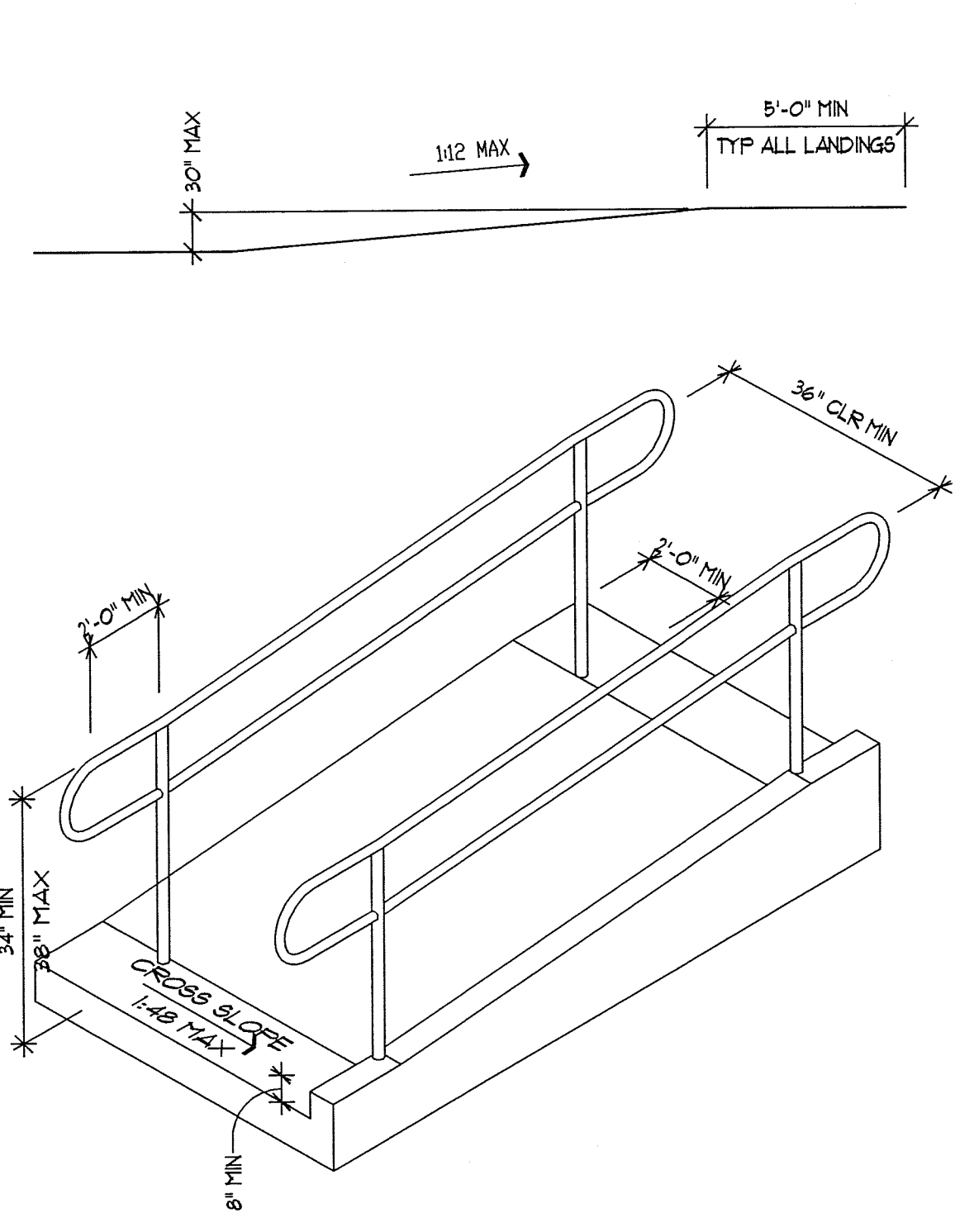


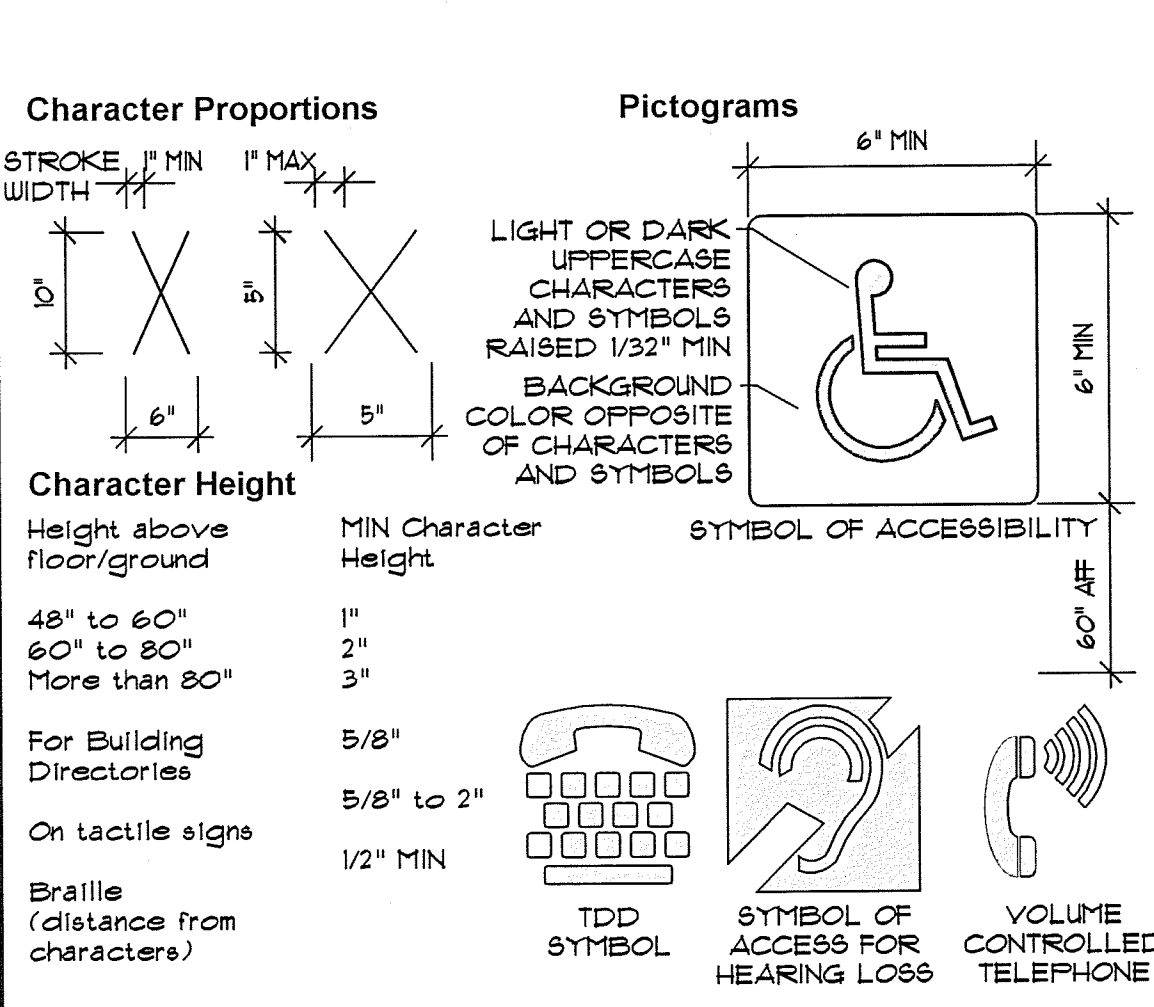
-Sink depth shall be 6 1/2" MAX.
 -Faucets shall be operable with one hand and shall not require tight grasping, pinching, or twisting of the wrist. The force required to activate faucets shall be 5 lb MAX. Self-closing faucets shall remain open for 10 seconds MIN.
 -For all dispensers and receptacles, mount any access points and controls within the applicable reach ranges. If the reach is over an obstruction, mount all access points and controls at 44" AFF MAX.

10 LAVATORIES & SINK
 BF-1 N.T.S.



-A slope steeper than 1:20 shall be considered a ramp.
 -Handrails are not required for ramps with a run of 12' or less.
 -The handrail extensions shall return to a wall, guard, or the walking surface, or continue to the handrail of an adjacent ramp.
 -Ramps and landings shall have curbs, walls, or railings that prevent people from traveling off the route or extend 12" MIN wider than the railings.
 -Landing width shall be at least as wide as the ramp leading to it.
 -At ramp direction changes, provide 60" by 60" landings MIN.

8 RAMPS
 BF-1 N.T.S.



Character Proportions
 STROKE, 1/8" MIN WIDTH
 1" MAX HEIGHT
 6" MIN WIDTH
 6" MIN HEIGHT

Character Height
 Height above floor/ground
 48" to 60"
 60" to 80"
 More than 80"

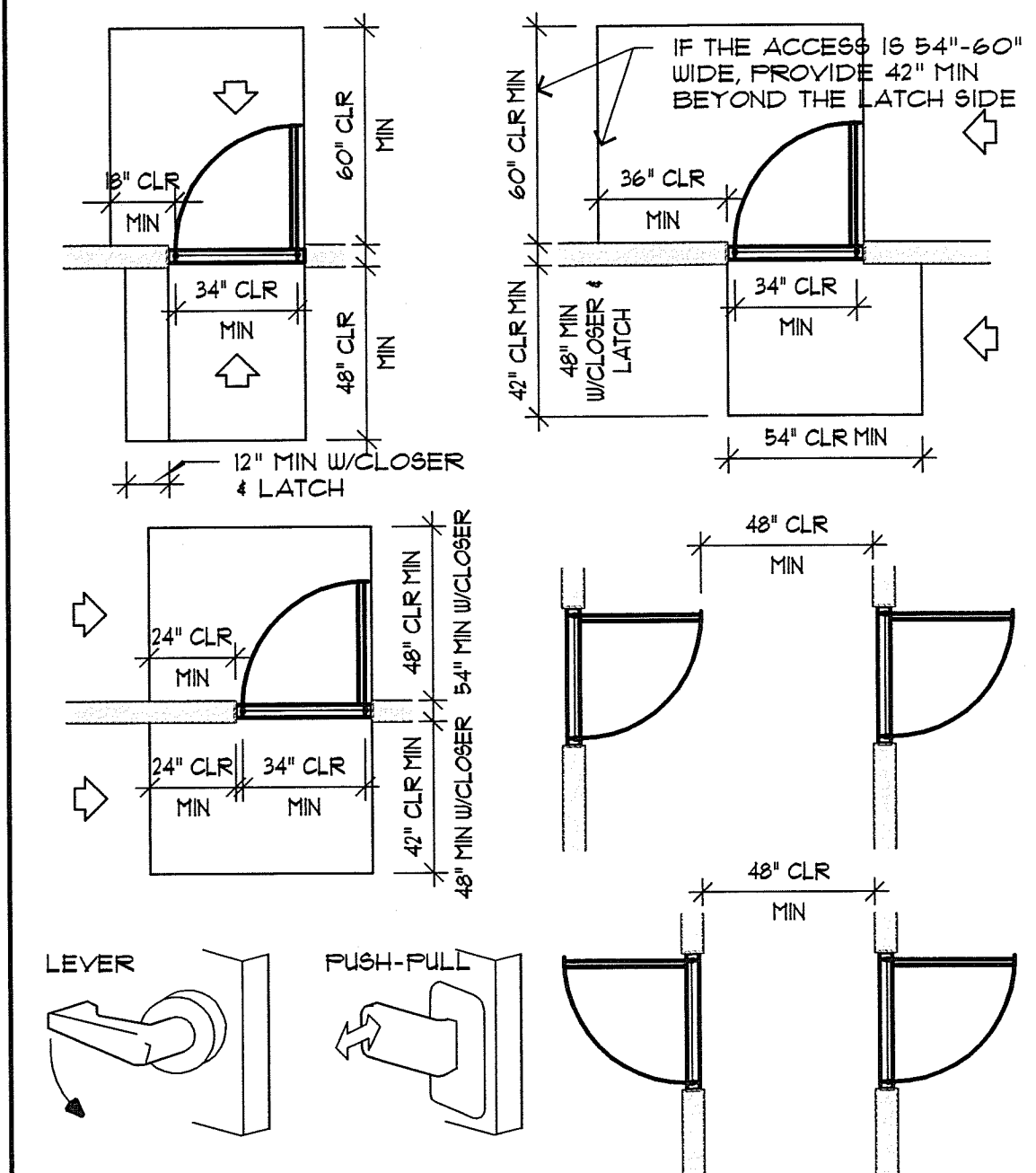
For Building Directories
 5/8"

On tactile signs
 1/2" MIN

Braille (distance from characters)

Pictograms
 LIGHT OR DARK UPPERCASE CHARACTERS AND SYMBOLS RAISED 1/32" MIN BACKGROUND COLOR OPPOSITE OF CHARACTERS AND SYMBOLS
 SYMBOL OF ACCESSIBILITY
 60" AFF
 TDD SYMBOL
 SYMBOL OF ACCESS FOR HEARING LOSS
 VOLUME CONTROLLED TELEPHONE

6 SIGNAGE
 BF-1 1/4"=1'-0"



-Sliding and Folding doors require the same maneuvering space as approaches to the push side of swinging doors.
 -Handles, pulls, latches, locks, and other operable parts on accessible doors shall have a shape that is easy to grasp with one hand and does not require tight grasping, tight pinching, or twisting of the wrist to operate. When sliding doors are in the fully open position, operating hardware shall be exposed and usable from both sides.
 -Door closers shall be adjusted so that from an open position of 90°, the time required to move the door to an open position of 12° will be 3 seconds MIN.
 -Fire doors shall have the minimum opening force allowable by applicable codes. The required force for pushing or pulling open doors other than fire doors shall be 5.0 lb MAX. This force does not apply to the force required to retract latch bolts or disengage other devices that hold the door in a closed position.
 -Power-assisted doors shall comply with ANSI/BHMA A166.19. The time required for such doors to open to the back check position shall be 3 seconds MIN. The force required to stop door movement shall be 15 lb MAX.
 -The bottom 12" of all swinging doors that are not automatic or power-assisted shall have a smooth, uninterrupted surface.

3 DOORS
 BF-1 1/4"=1'-0"

ADA GENERAL NOTE DISCLAIMER
 BHH Partners indicates that, in its professional opinion, the attached design conforms to the regulations published July 26, 1991 under Title III of the Americans with Disabilities Act. It does not represent, warrant, guarantee or otherwise indicate to the client that these documents will fully comply with interpretations of ADA requirements by regulatory bodies or court decisions. The ADA is not a building code, and therefore will be enforced NOT in strict compliance with implementation regulations, but in keeping with the intent of the Act to eliminate discrimination based on disabilities as defined in the Act.

ALL DETAILS, DIMENSIONS, NOTES, DIAGRAMS, ETC. ARE PROVIDED AS A CONVENIENCE TO THE GENERAL CONTRACTOR. ALL CLEARANCES SHOULD BE VERIFIED AGAINST THE REQUIREMENTS OF ADA AND CBO/ANSI A117 WHICH TAKES PRECEDENCE OVER ANYTHING SHOWN, DRAWN OR IMPLIED IN THESE DRAWINGS. ANY AND ALL DISCREPANCIES SHOULD BE REPORTED TO BHH PARTNERS IMMEDIATELY.

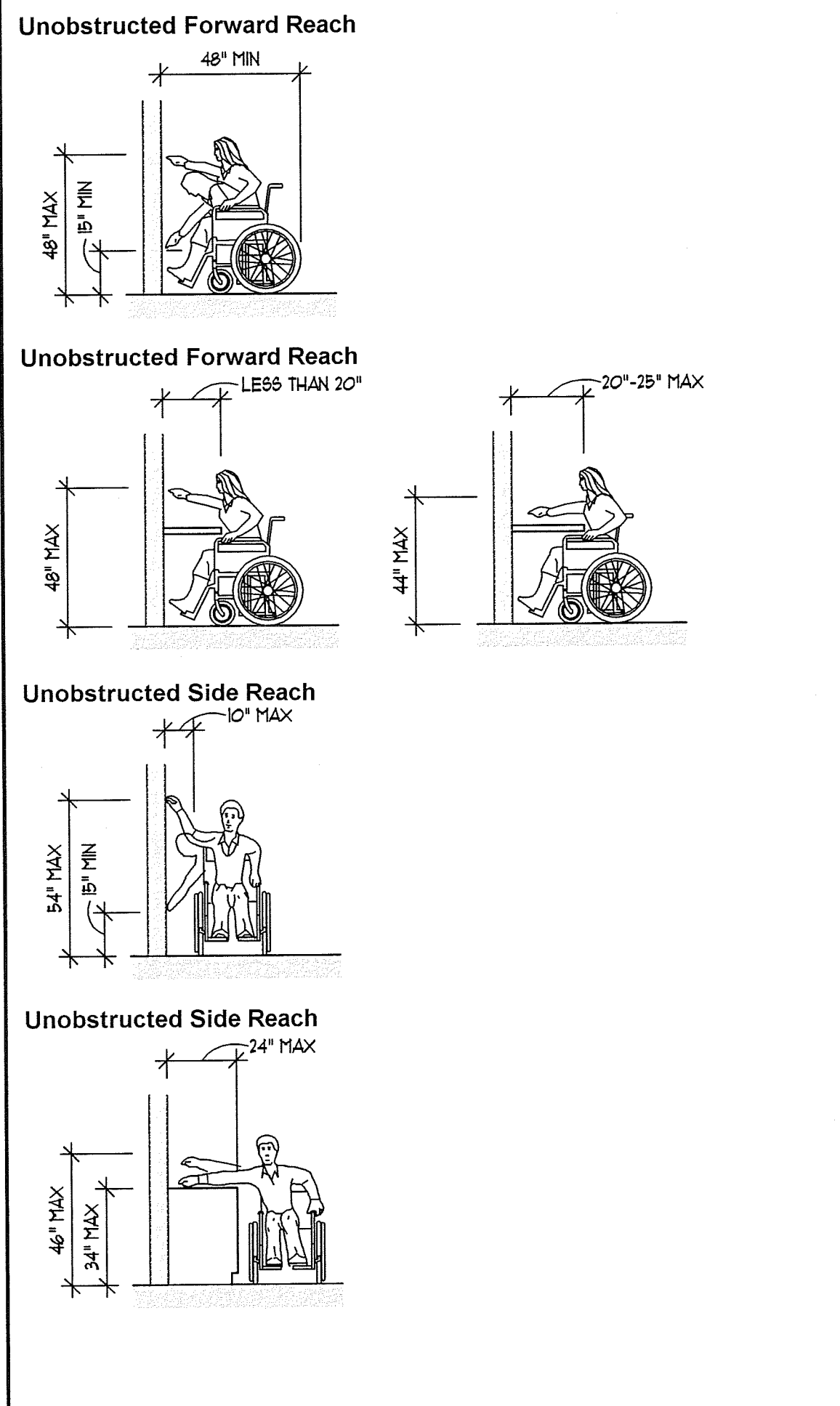
THESE ARE GENERAL DETAILS; SOME MAY NOT BE APPLICABLE TO THIS PROJECT. SEE PLANS FOR SPECIFIC AREAS WHERE DETAILS MAY APPLY.

REVISIONS:
 JOB NO: 60815
 DATE: 10/09/03
 DRAWN BY: KJONES
 CHECKED BY: JUESTHOFF

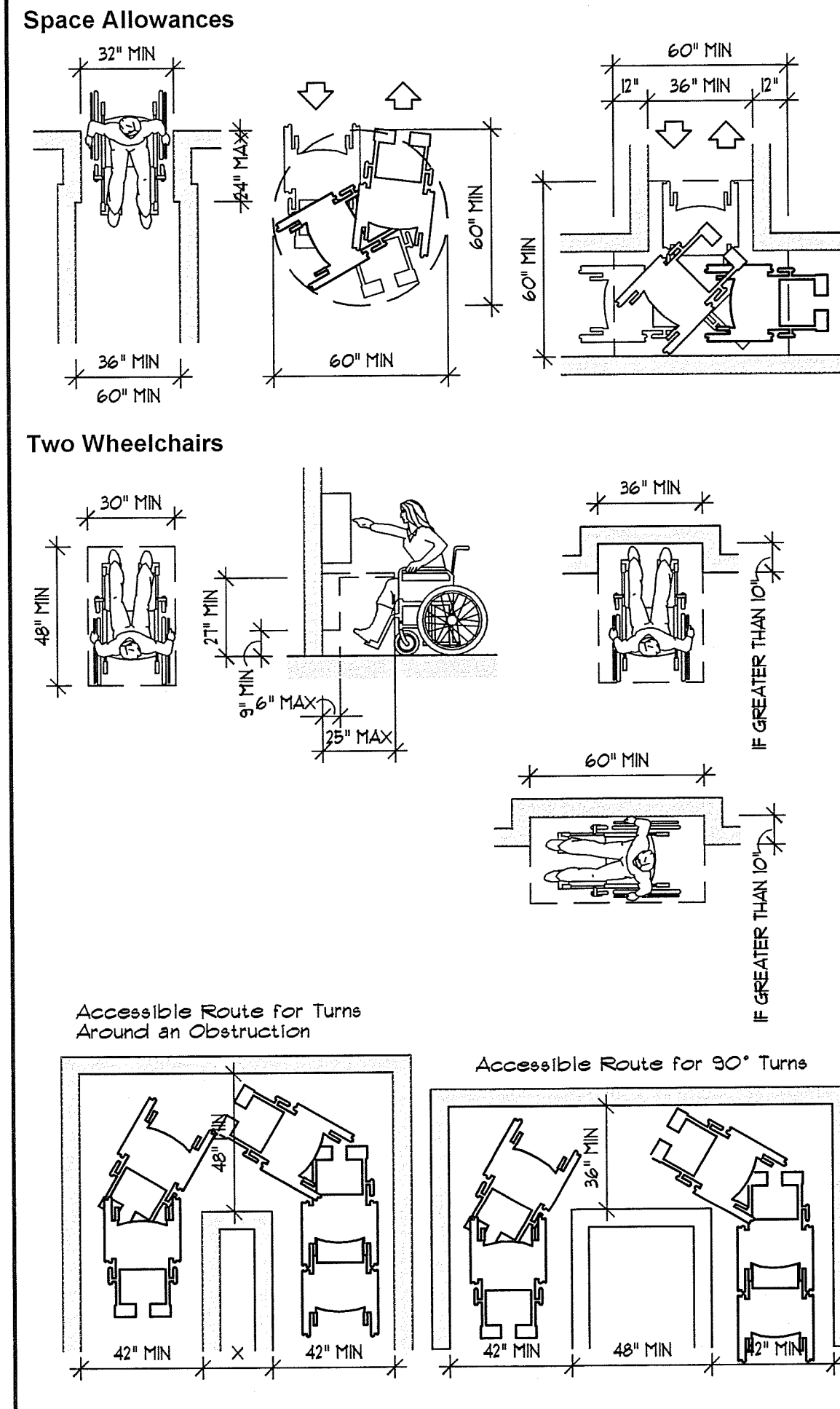
ISSUED FOR CONSTRUCTION: 10/09/03
 MHT



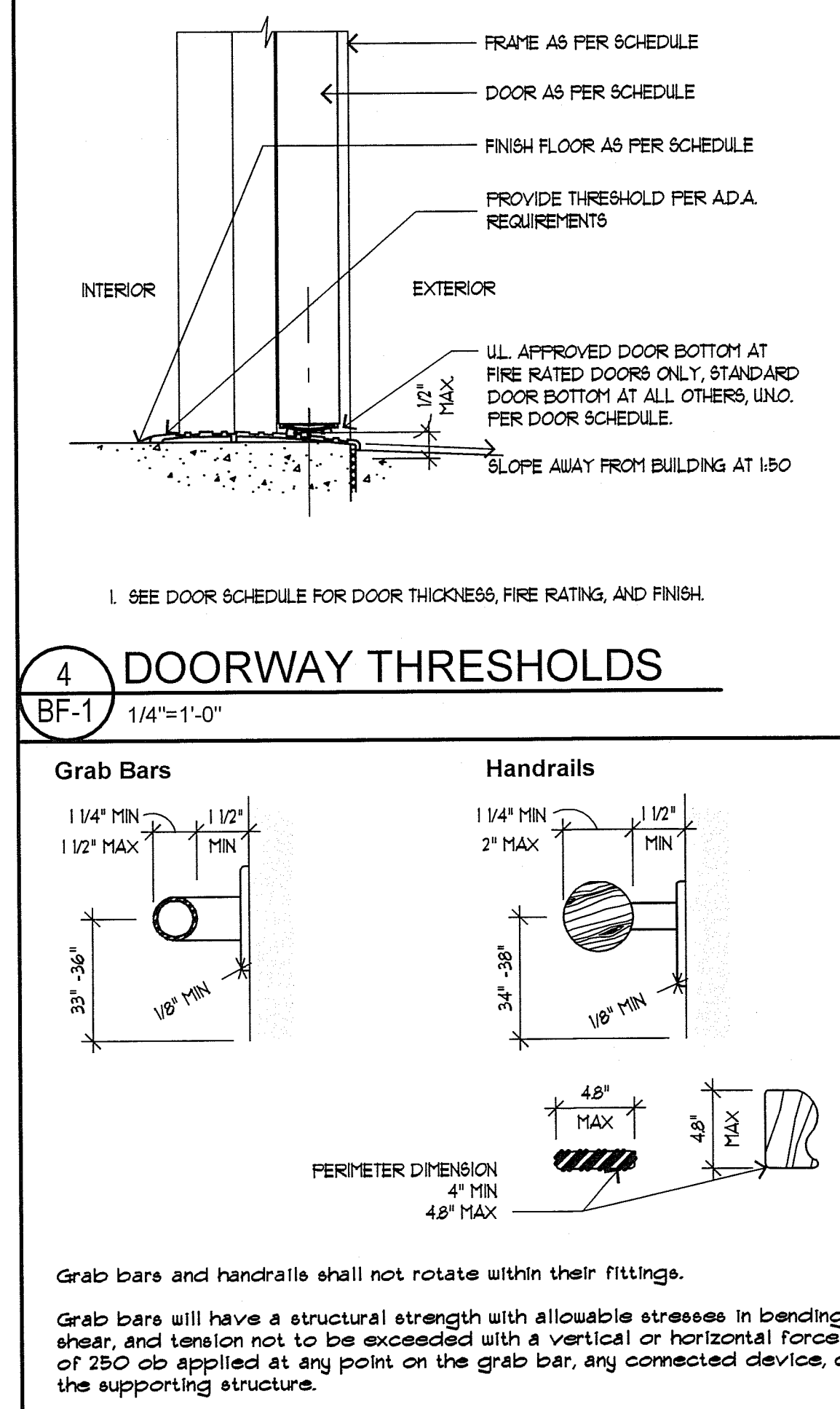
9 REACH RANGES
 BF-1 1/4"=1'-0"



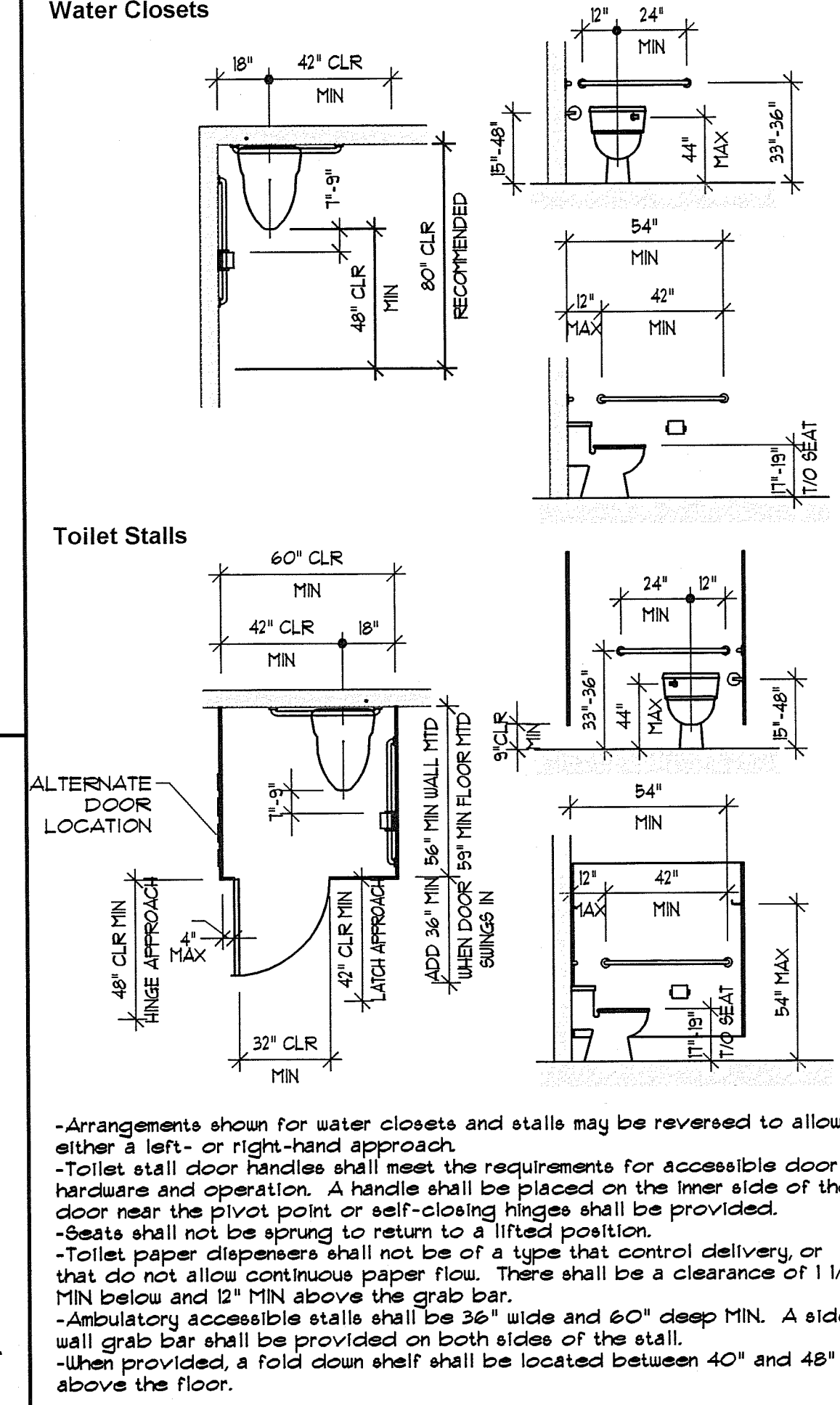
7 ACCESSIBILITY CLEARANCES
 BF-1 1/4"=1'-0"



4 DOORWAY THRESHOLDS
 BF-1 1/4"=1'-0"



5 GRAB BARS & HANDRAILS
 BF-1 N.T.S.



2 WATER CLOSETS-ADA/ANSI
 BF-1 N.T.S.

bhh Partners
 BRECKENRIDGE, CO 80424 (970) 453-6880
 P.O. BOX 931 166 EAST ADAMS
 DILLON CAMPUS ADDITION
 COLORADO MOUNTAIN COLLEGE
 333 FIEDLER AVE, DILLON, COLORADO

© 2009
 SHEET NUMBER:
BF-1.0
 BARRIER FREE REQUIREMENTS
 OF: 1