

COPYRIGHTS - Ownership of Instruments of Services: All plans, specifications & other documents and instruments prepared by the architect/engineer are subject to copyright protection under "Architectural Work" under Section 101 & 102 of the Copyright Act, 17 U.S.C., amended December, 1990, and herein as Architectural Protection Act of 1980, and shall remain the property of the architect. The Architect shall retain all common law, statutory and other reserved rights, including the copyright, therein. The protection includes but is not limited to the overall form as well as the arrangement and composition of spaces and elements of the design. Under such protection, unauthorized use or reproduction, in whole or in part, of these plans, work or forms is prohibited, and any such use or reproduction, in whole or in part, is hereby prohibited.

ROOM FINISH SCHEDULE

NO.	NAME	FLOOR		BASE		WALLS				CEILING			REMARKS
		MAT'L.	FINISH	MAT'L.	FINISH	NORTH	SOUTH	EAST	WEST	MATERIAL	FINISH	FIN HGT(EL)	
100	EVIDENCE WAREHOUSE	CONC.	-	-	-	CONC. / PT.	CONC. / GB / PT.	CONC. / GB / PT.	CONC. / PT.	METAL	-	21' - SLOPING	
101	TRAFFIC WAREHOUSE	CONC.	-	-	-	CONC. / PT.	GB / PT.	CONC. / PT.	GB / PT.	METAL	-	21' - SLOPING	
102	JANITOR CLOSET	CONC.	-	FRP	-	GB + 48" FRP	EXISTING	GB + 48" FRP	GB + 48" FRP	GB	PT.	8'-0"	
103	OFFICE	CONC.	VCT	VINYL	-	GB / PT.	EXISTING	GB / PT.	EXISTING / PT.	SAT	-	8'-0"	
104	STORE ROOM	CONC.	VCT	VINYL	-	GB / PT.	EXISTING	GB / PT.	EXISTING	SAT	-	8'-0"	
105	LOCKER ROOM	CONC.	VCT	VINYL	-	GB / PT.	EXISTING	GB / PT.	GB / PT.	SAT	-	8'-0"	
106	ADA BATHROOM	CONC.	VCT	FRP	-	GB + 48" FRP	EXISTING + 48" FRP	EXISTING + 48" FRP	GB + 48" FRP	SAT	-	8'-0"	

ABBREVIATIONS	CONC.= CONCRETE	VCT= VINYL COMPOSITION TILE	FRP= FIBER REINFORCED PLASTIC PANEL - 4' HIGH
	GB= GYPSUM BOARD	PT.= PAINT PER SPECS.	SAT= SUSPENDED ACOUSTICAL TILE WITH RADIUS TOP TRIM
	WB= WONDER BOARD	S.S.= SMOOTH FINISH & SEAL	CMU= CONCRETE MASONRY UNIT - PAINTED
	ST.= STAIN	WD.= WOOD	

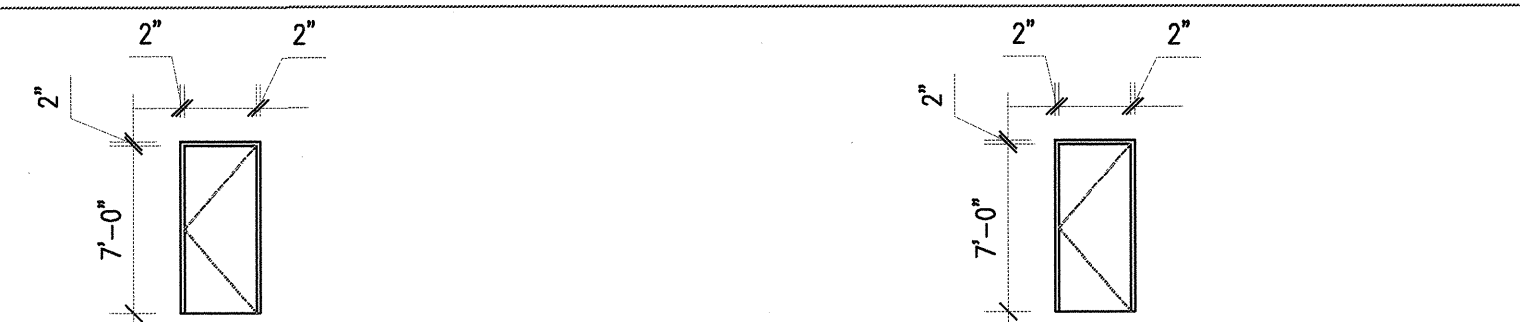
- GENERAL NOTES**
- MATCH AND PATCH EXISTING BUILDING MATERIALS AS REQUIRED BY ALL DEMO AND NEW CONSTRUCTION.
 - REFER TO REFLECTED CEILING PLAN AND INTERIOR ELEVATIONS FOR FURTHER INFORMATION.
 - VERIFY WALL TEXTURE, PAINT, STAIN MATERIALS AND SHEENS WITH ARCHITECT AND PROVIDE SAMPLES OF EACH.

DOOR SCHEDULE

TYPE	SIZE	FRAME	STYLE	HARDWARE	REMARKS
TYPE A	3'-0" W. X 7'-0" H. X 1-3/4"	2" X 5-7/8" HM.	S.C. WOOD W/ NO WINDOW	GROUP 1 & 2	STAINED OAK DOOR, PAINTED FRAME. SEE NOTES
TYPE B	3'-0" W. X 7'-0" H. X 1-3/4"	2" X 5-7/8" HM.	METAL INSULATED - PAINTED	GROUP 3	1-1/2 HOUR FIRE RATING, SCHOOL LOCK
TYPE C	3'-0" W. X 7'-0" H. X 1-3/4"	2" X 4" HM.	METAL INSULATED - PAINTED	GROUP 4	NON-RATED
TYPE D	METAL GATE PER DRAWINGS	METAL GATE PER DRAWINGS	METAL GATE PER DRAWINGS	NONE	
TYPE E	10'-0" W. X 10'-0" H.	PER MANUFACTURER	STEEL COILING	NONE	3-HOUR RATED

NOTES: S.C.= SOLID CORE PR.= PAIR H.M.= HOLLOW METAL ALUM.= ALUMINUM ANOD.= ANODIZED

- ALL DOORS TO HAVE LEVER HANDLES & CLOSERS; NO CLOSER ON THE REST ROOM DOORS.
- CONTRACTOR IS RESPONSIBLE FOR VERIFYING THE ROUGH OPENING SIZE AND QUANTITIES OF DOORS.
- CONTRACTOR IS TO SUBMIT DOOR SHOP DRAWINGS FOR THE ARCHITECT TO REVIEW PRIOR TO PLACING AN ORDER.
- SUBMIT HARDWARE SCHEDULE FOR APPROVAL - PROVIDE BUTTS, LATCH, STOPS, SILENCERS, WEATHER SEALS, CLOSERS & LOCKS. TYP. @ ALL DOORS, KEY TO OWNER LOCKS
- PROVIDE SEPARATE DRIP FLASHING AT THE HEAD OF EXTERIOR DOORS.
- PROVIDE SHIM, BACKER ROD, AND SEALANT @ PERIMETER OF ALL FRAMES.



- TYPE A**
- 3'-0" X 7'-0" X 1 3/4" SOLID CORE WOOD DOOR
 - 2" X 5 7/8" H.M. FRAME ("KNOCK-DOWN ALT.") @ INT. DOORS
- TYPE B**
- 3'-0" X 7'-0" X 1 3/4" INSULATED PAINTED METAL DOOR
 - WELDED HOLLOW METAL FRAME

FINISH SCHEDULE

KEY	MANUFACTURER	STYLE	COLOR	AREA/NOTES
BASE				
B-1	BURKE	4" BURKEBASE RUBBER-TYPE TS	527 CLAY	
PAINT				
P-1	BENJAMIN MOORE	ben INTERIOR ACRYLIC LATEX SEMI-GLOSS W627	WHITE	
P-2	BENJAMIN MOORE	ben INTERIOR ACRYLIC LATEX SEMI-GLOSS W627	NAVAJO WHITE 947	
VINYL FLOORING				
VCT-1	ARMSTRONG	CIVIC SQUARE COMMERCIAL VINYL TILE	12" X 12" STONE TAN	
PLASTIC				
PL-1	GLASBORD	GLASBORD-P FIBER REINFORCED PLASTIC PANEL	B4 IVORY	ADA BATHROOM & JANITOR CLOSET

DOOR HARDWARE SCHEDULE

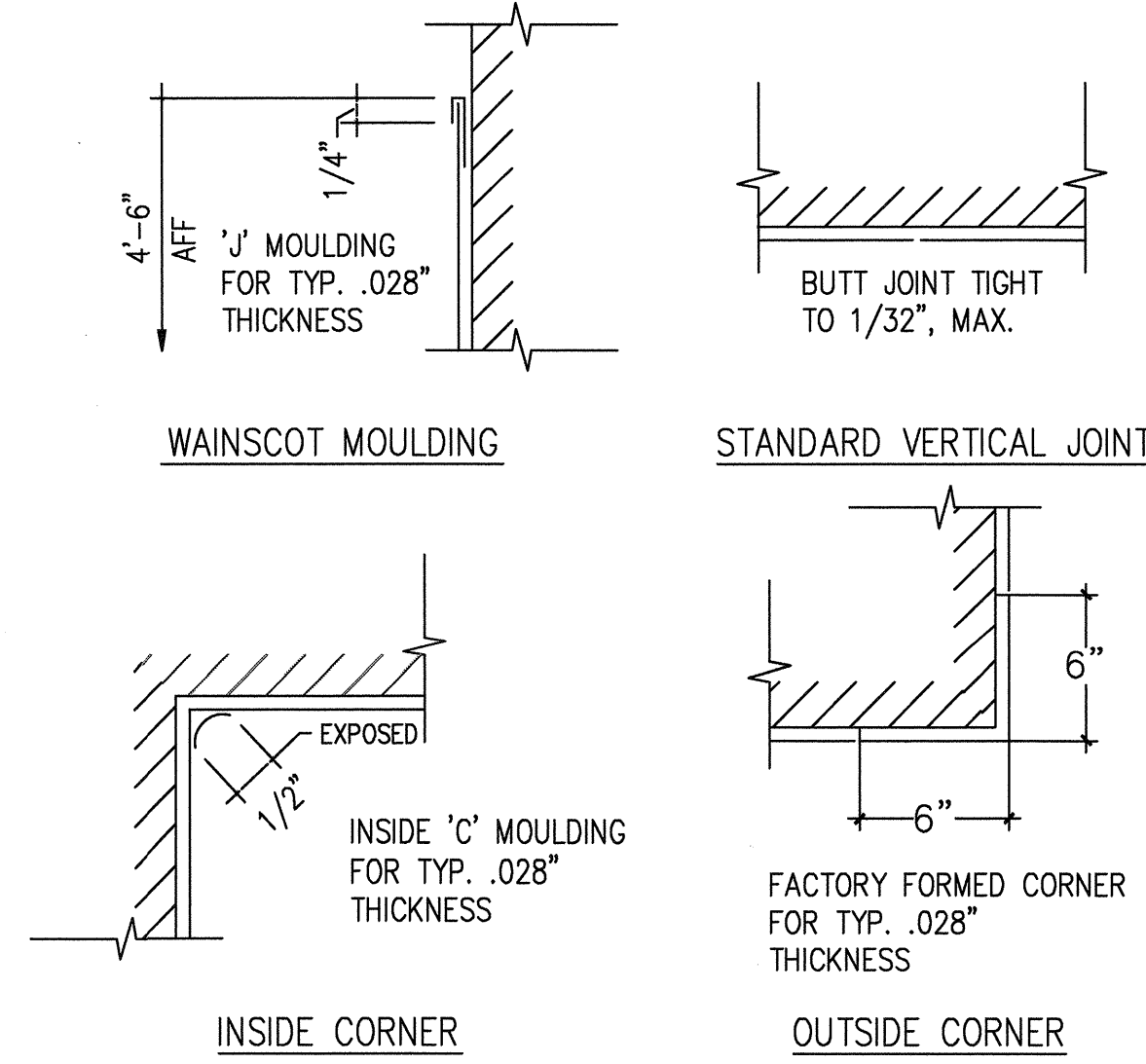
GROUP	GROUP 1	GROUP 2	GROUP 3	GROUP 4
TYPE	TYPE A	TYPE A	TYPE B	TYPE C
LOCATION	STORE ROOM / JANITOR CLOSET	ADA BATHROOM / LOCKER ROOM	OFFICE DOOR	EXIT DOOR
HARDWARE	HINGE: HAGER BB1279, 4-1/2 X 4-1/2, 652 LOCKSET: BEST 93K-7-D-160-53-626 WALL STOP: IVES WS404CVX 626	HINGE: HAGER BB1279, 4-1/2 X 4-1/2, 652 CLOSER: NORTON J1703BC 689 PUSH PULL W/ THUMBTURN: IVES PUSH 6" X 16" 8200 - CFT 628 IVES PULL 6" X 16" 8302 628	HINGE: HAGER BB1279, 4-1/2 X 4-1/2, 652 LOCKSET: BEST 93K-7-B-160-53-626 CLOSER: NORTON J1703BC 689 SMOKE SEAL HEAD & JAMB: PEMKO 306AV	HINGE: HAGER BB1279, 4-1/2 X 4-1/2, 652 LOCKSET: BEST 93K-7-Y-160-53-626 CLOSER W/ STOP: NORTON J1703BC 689 THRESHOLD: PEMKO 277AR
		LOCKSET: BEST 1E-7A4-C140-RP3-626 WALL STOP: IVES WS404CVX 626 KICK PLATE - 1 EA. SIDE: IVES 9" X 33" 8400 628	AUTOMATIC DOOR BOTTOM: PEMKO 412 CPKL KICK PLATE - 1 EA. SIDE: IVES 9" X 33" 8400 628	WEATHERSTRIP HEAD / JAMB: PEMKO 306AV DOOR BOTTOM DRIP STRIP: PEMKO 345A

MATERIAL COLOR SCHEDULE

ITEM	COLOR	ITEM	COLOR
WAREHOUSE DECK	SEALED CONCRETE - ROOM 100 & 101 - COLOR SELECTED BY OWNER	ALL FLOORS	SEE FINISH SCHEDULE
JANITOR DECK	SEALED CONCRETE - ROOM 102 - COLOR SELECTED BY OWNER	ALL METAL DOORS	COLOR SELECTED BY OWNER
OFFICE DECK	LAMINATE - ROOM 103 - SEE FINISH SCHEDULE	ALL WOOD DOORS	COLOR SELECTED BY OWNER
STORE ROOM DECK	LAMINATE - ROOM 104 - SEE FINISH SCHEDULE	INTERIOR PAINT	SEE FINISH SCHEDULE
LOCKER ROOM DECK	LAMINATE - ROOM 105 - SEE FINISH SCHEDULE	ALL EXTERIOR	ALL EXTERIOR BUILDING COLORS - SELECTED BY OWNER - ALL COLORS WILL BE STANDARD.
BATHROOM DECK	LAMINATE - ROOM 106 - SEE FINISH SCHEDULE	ALL CEILING TILE	WHITE
HVAC DUCTWORK	ALL COLORS TO BE SELECTED BY OWNER	INTERIOR SIGNAGE	TO BE SELECTED BY OWNER

EQUIPMENT SCHEDULE

ITEM	DESCRIPTION	SIZE	REMARKS
3-HOUR OVERHEAD COILING DOOR	MCKEON DOOR SYSTEM: AUTO-SET MODEL FSPD-M-6 FIRE DOOR	10'-0" X 10'-0"	
SLIDING GATE	TYMETAL HEAVY DUTY OVERHEAD SLIDE GATE	10'-0" X 10'-0"	CONTRACTOR TO PROVIDE CYLINDER LOCK WITHIN GATE ASSEMBLY
METAL PANELS	FLATIRON STEEL 26 GA. CORRUGATED STEEL PANELS	10'-0" X 10'-0"	COLOR SELECTED BY OWNER
CHAIN LINK FENCING	FENCE 11 GA. CHAIN LINK FABRIC, POSTS, & ANCHOR PLATES		SEE DETAILS FOR FENCING SIZE
FENCE GATE LOCK	PANIC BAR LOCK BOX WITH KEYS & LOCK CYLINDER		CYLINDER TO BE KEYPED PER CITY REQUIREMENTS
FENCE GATE	PREFABRICATED 7' X 4' PEDESTRIAN FENCE GATE	7'-0" X 4'-0"	
MOP SINK	MUSTEE 24" X 24" MOP SINK OR APPROVED EQUAL	24" X 24"	COLOR: WHITE
SERVICE FAUCET	CHICAGO FAUCETS B97 RCF B" WALL MOUNTED SERVICE SINK FAUCET OR APPROVED EQUAL		
MIRROR	WOODCRAFTERS DEL MAR 24" X 30" WALL MIRROR IN WHITE OR APPROVED EQUAL	24" X 30"	
BATHROOM FAUCET	AMERICAN STANDARD 2275.509CP "COLONY SOFT" 4" CENTERSET BATHROOM FAUCET OR APPROVED EQUAL		ADA COMPLIANT
BATHROOM SINK	ST. THOMAS CREATIONS 1120040WH "DALJA" WALL HUNG BATHROOM SINK OR APPROVED EQUAL		
BATHROOM TOILET	AMERICAN STANDARD 2886.216.020 "H2OPTION" TWO PIECE TOILET OR APPROVED EQUAL		ADA COMPLIANT
CEILING TILE	ARMSTRONG, 2'X2', CORTEGA, MEDIUM TEXTURE, S.Q. LAY-IN, WHITE #769, W/USG INTERIORS GRID, DOWN DXL, #H050, FLAT WHITE		
BATHROOM GRAB BARS	BOBRICK GRAB BAR, 1-1/2" @ 18 GA. SATIN S.S. OR APPROVED EQUAL	AS INDICATED ON DWG.	ADA COMPLIANT



TYPICAL FRP DETAILS

SCALE: NTS

CAI DESIGN GROUP INC.
 ARCHITECTS / ENGINEERS / CONSTRUCTION MANAGEMENT
 1440 14th Street - Suite A - Aurora, CO 80010
 PHONE: 303-341-1421
 E-MAIL: cdesign@comcast.net
 FAX: 303-368-1775

870 PARFET STREET
 CITY OF LAKEWOOD

870 PARFET STREET
 LAKEWOOD, COLORADO 80121
 CITY OF LAKEWOOD

Issue Record:
 CD SET 02/15/10

Designed By: DW/CAF
 Date: 01/28/10

Drawn By: CAF
 Approved By: SK

Project No.:
 File Name:

Sheet Title:
 DOOR & FINISH SCHEDULE

Sheet Number:
 A601

SHEET of